

Non - Conveyable Items



Items displayed below may fit within the ND service dimensions but due to their nature (contents/profile) must be handled via the NC sort. This is to reduce the risk of damage to items and sort equipment at the hub. The depot sort process should check the profile of the ND items in conjunction with this poster and in addition to following the normal label designators.



All Metal



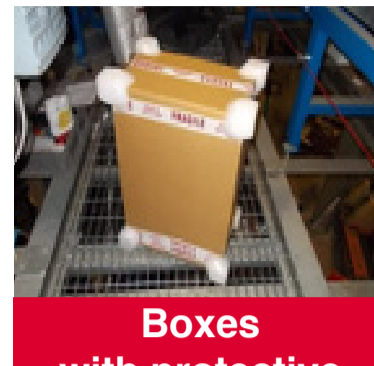
Bricks



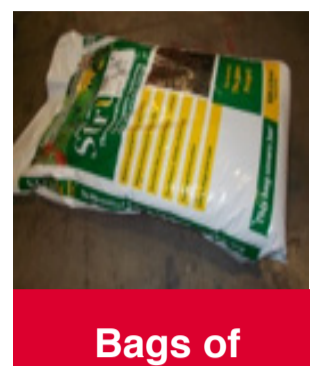
Blue cool boxes



Buckets



Boxes with protective corners



Bags of compost



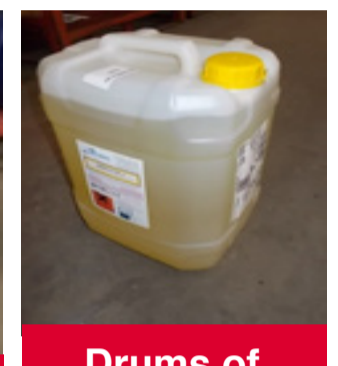
Car Parts



Car mats



Drums



Drums of liquid



Limited Quantities (LQ)



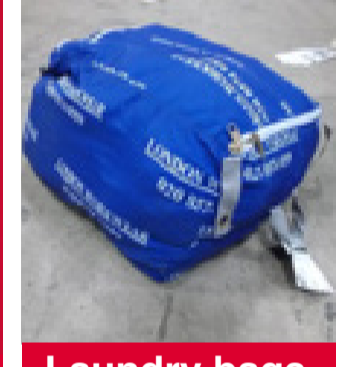
Flowers in Water



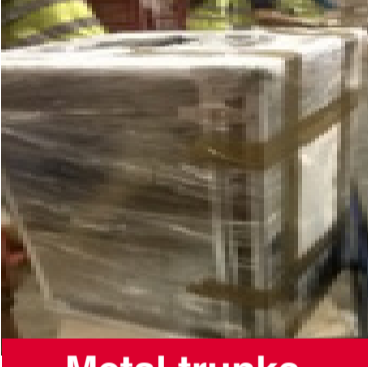
Glass frame & windows



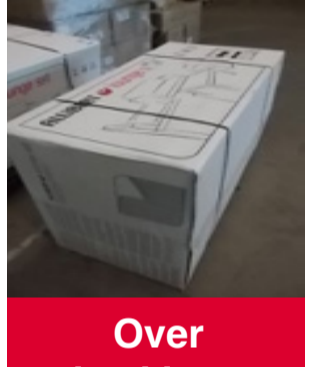
Heavy Item



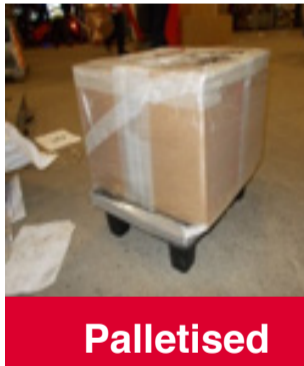
Laundry bags



Metal trunks



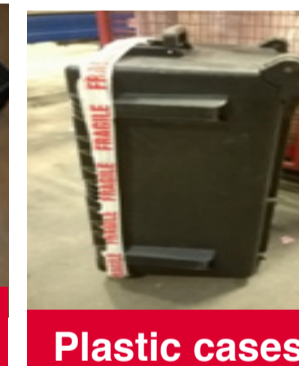
Over sized items



Palletised freight



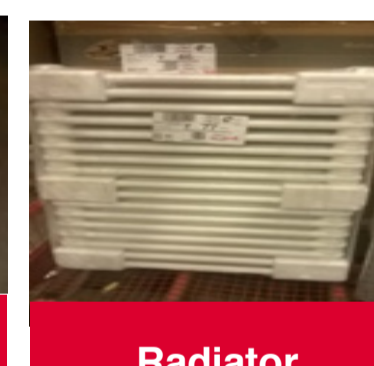
Popup advertisement cases



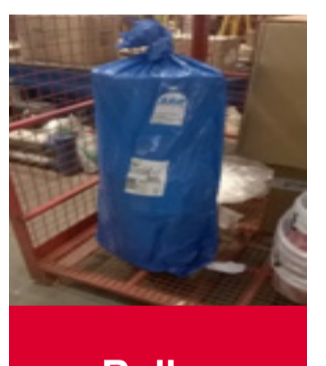
Plastic cases on wheels



Reels of cable, rope, chains and wire



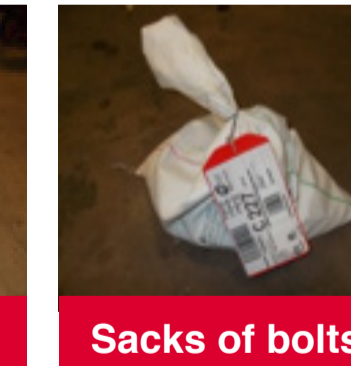
Radiator



Rolls



Rolls of bubble wrap



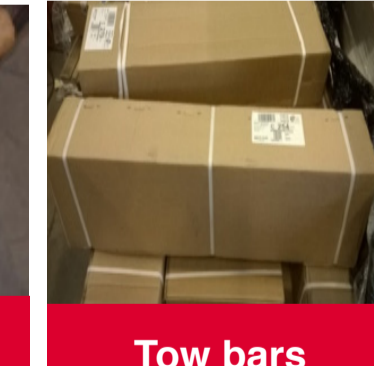
Sacks of bolts and metals



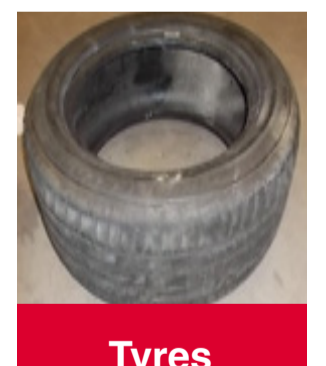
Suitcases



Tubes



Tow bars



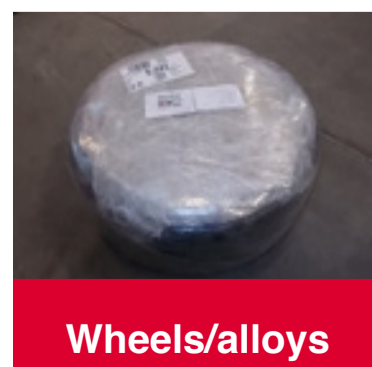
Tyres



TV's



Tins and tubs of paint



Wheels/alloys



Washing machine/tumble dryers

Items such as these must be segregated and put into NC cages.